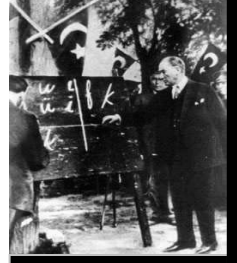




TURKISH EDUCATIONAL FOUNDATION

P.O. Box 391165 Mountain View, CA 94039
www.tef-usa.org



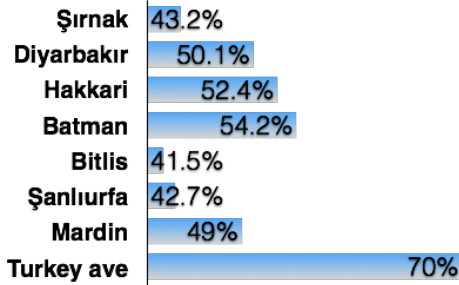
Fall 2014

"Hayatta en hakiki mürşit ilimdir." Mustafa Kemal Atatürk

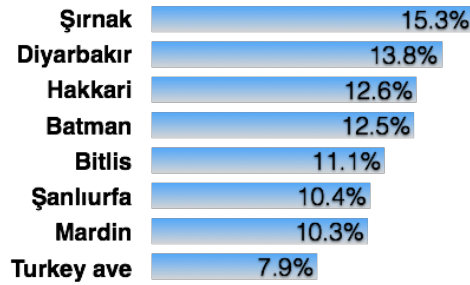
Dear TEF supporter,

On behalf of the Board of Trustees, I would like to wish you all a joyous holiday season and thank you for your continued support of the Turkish Educational Foundation. Your generous donations enabled 431 high potential, low-income students to continue their secondary education in Turkey last year. We have continued to partner with highly regarded educational non-profits to reach out to these students and provide scholarships averaging \$360/year.

It may be difficult to imagine the challenges in keeping children in school throughout their secondary education and how as little as \$1 a day may help. Yet according to the data published by the Turkish Statistics Institute, secondary school enrollment rates vary from 35% to 92% across provinces, with an average of 70%. Notably, the low enrollment rates in the eastern and southeastern regions of the country correspond to the highest regions of unemployment. The modest scholarships provided by TEF are what these children need to tip the scale in favor of staying in school.



Secondary school enrollment rate



Unemployment rate

A student from Adıyaman, who received a scholarship from our partner Çağdaş Yaşamı Destekleme Derneği, gained admission last year to the Marmara University Department of Dentistry. She explains it simply and powerfully: "I'm one of nine siblings, one with a disability. My brothers are unemployed, and we were in a dire financial situation. Thanks to the scholarship I received from ÇYDD, I was able to pay for my school expenses, and buy supplies and books to study for the college entrance exam. First and foremost, I want to be a very successful dentist. Then, I will sponsor other girls to continue their education."

Please take a moment to ponder the results, the gratitude and the 'pay-it-forward' attitude exemplified by this student and others like her. I urge you to donate generously to TEF and support more of these bright, conscientious students that need your help.

Sincerely,

Müge Bakırcıoğlu, TEF Secretary

Board of Trustees

Murat Alaybeyi, Sumru Aral, Müge Bakırcıoğlu, Duygu Demirlioğlu, Selda Sangöl Heavner, Ahmet Karakaş, Dilek Güven Zafar



TURKISH EDUCATIONAL FOUNDATION

- ☐ I/We would like to join TEF.
- ☐ \$30 Individual ☐ \$50 Family ☐ Other _____
- ☐ Yes, I/we support the **Aydın Bir Türkiye İçin Elele** campaign.
- ☐ **Bir Mum** (One Candle) \$400 will support **one student**.
About \$1 a day covers the educational expenses of a student for a year.
- ☐ **Yeni Ay** (New Moon) \$2,000 will support **5 students**.
- ☐ **Ay Yıldız** (Moon and Star) \$4,000 will support **10 students**.
- ☐ **Dolunay** (Full Moon) \$10,000 will support **25 students**.
- ☐ **Güneş** (Sun) \$20,000 will support **50 students**.

NAME _____

Street Address _____ CITY _____ STATE/ZIP _____

e-mail Address _____ Phone Number _____

Please make checks payable to: Turkish Educational Foundation, P.O. Box 391165, Mountain View, CA 94039.
All donations & membership dues are tax deductible. *IRS TIN: 23-7050060; CA Franchise Tax Board ID: D 0595318*

431 students received TEF scholarships last year

In fiscal year 2013-14, TEF disbursed a total of \$155,200 in scholarship aid to 431 students. Our expenses, mainly mailing costs, were limited to about \$4,000, only 2.5% of expenditures. We awarded scholarships to students from all parts of Turkey, with an average of \$360 per student per year. The organizations we collaborated with to distribute the funds are below.

Organization	Students	Total \$
Çağdaş Yaşamı Destekleme Derneği	255	\$86,500
Anadolu Çağdaş Eğitim Vakfı	90	\$40,500
Gündoğdu Çağdaş Toplum Gönüllüleri	70	\$21,000
Kadın Araştırmaları Derneği	16	\$7,200
TOTAL	431	\$155,200



A heartfelt Thank You and Warmest Wishes for the holiday season from all of us at TEF and the children you support!

We are counting on your generous donations to help more students continue their education. Please keep TEF in your thoughts in this season of giving.

Former TEF trustee Çelik Güracar with students and volunteers at Gündoğdu Çağdaş Toplum Gönüllüleri